



From the Rector:

An Invitation to a Holy Lent

Years ago, a colleague introduced me to one of the most amazing prayers which I have ever encountered. I feel quite comfortable speaking with God in my own words as they come to me, and I hope that you do as well. But sometimes it is so helpful to be guided by the prayers of those who have lived in close intimacy with the Lord Jesus. Charles de Foucauld is one of these blessed souls, and the "Prayer of Abandonment" which is inspired by his meditations has been for me an incredible guide in my spiritual formation. It fits perfectly with the spirit of Lent, in which we join in our Lord's 40 day sojourn in the desert. It is a season to simplify life, to focus on those things which have eternal significance, and perhaps to engage in a new spiritual practice which will reinvigorate our relationship with Christ.



Nothing simplifies and clarifies life more than a full and complete abandonment to the will of God. It can be frightening to do this – and to truly mean it! - but it is, in fact, the pathway to a life of deep joy and abiding peace. Below you will find the prayer of Charles de Foucauld as I have formatted it for use with my Anglican prayerbeads. Whether you have such beads or a rosary or a prayer rope or none of these, will you consider praying these words during the season of Lent? Afterward, be sure to listen in silence as the Holy Spirit speaks to you and guides you. You may be surprised – and delighted – by those good things which God has in mind for your life.

Prayer of Abandonment from Charles de Foucauld For Lenten use with Anglican Prayerbeads

Father, I abandon myself into your hands. Do with me what you will.
Whatever you may do, I thank you.

- + I am ready for all; I accept all.
- + Let only your will be done in me, and in all your creatures.
- + Into your hands I commend my soul.
- + I offer it to you with all the love of my heart.
- + For I love you, Lord, and so I need to give myself.
- + I need to surrender myself into your hands.
- + Without reserve, and with boundless confidence, for you are my Father.

Nathan W. Ferrell +

Mission in Motion

The Altar Guild at Saint Mary's ensures that the altar is properly prepared for all worship services. We assign a team of two or three altar guild members to work each week to cover the services as needed. We set up and clean-up for Eucharistic celebrations. We also work with Father Nathan, Beth and parish families planning for wedding and funeral services. Twice yearly, we gather to clean the altar area and polish the silver and brass. We also maintain all of the linens, ensuring they are cleaned, mended and stored properly. It's a quiet ministry, but one that is vital to our life as a parish.

Inside this edition

From the Rector : A Holy Lent	1
Mission in Motion: Altar Guild	1
Deacon's Corner	2
Spiritual Gifts	2
Ash Wednesday	2
Vestry Update	3
Lenten Series: "Chanting"	3
Stewardship	4
Confirmation Class	4
Lenten Schola Concert	4
Legacy Project Update	5
Book Bake & Soup Sale	5
Outreach Musings	6
Buy coffee - Support Souper Supper	6
Souper Supper in March	6
Habitat for Humanity Build	7
Habitat Run/Walk and visitors	7
Summer at S. Mary's	8
Acolyte Training	8
VBS 2014 -Help wanted	8
Guiding RAY	9
Our Shared Narrative of Faithfulness	10-11
Kudos & Notes	12
Parish Happy dates	13
Worship Servers schedule	14
March Calendar	15

From the Deacon's Corner:

Dear Ones,

Hard to believe that our very long winter is moving toward spring and that we are entering into the season of Lent yet again. We are so fortunate that our Lenten season is part of the rhythm and flow of our life of faith, the cycle of sacred seasons that keeps us grounded and guided on the journey. The season of Lent is a special opportunity for us to acknowledge the ways in which we fall short and to increase our faithfulness by a change of heart. "Remember that you are dust and to dust you shall return"

When we observe Ash Wednesday together and our foreheads are marked with ashes, we hear those words spoken to us. It isn't easy to admit to our smallness, our insignificance and our mortality, but without that humility and willingness to acknowledge our need for forgiveness, we cut ourselves off from being able to receive God's mercy in all its fullness. We are the dust of the earth and we will return to the earth, there is no doubt of that. It is God who has breathed life into that dust and has given us the opportunity to live and marvel at the life we are given and to share that life in all its abundance for as long as we have it.

To know the love and joy and peace of living in Christ and loving our neighbor is an incredible gift we cannot earn and do not deserve, and yet God gives it to us and we decide how to use it. At the end only love matters, how we loved each other and how we were loved. Jesus' promise of eternal life is worth every difficulty we must endure on our dusty road.

It is a difficult paradox to think of ourselves as specks of dust and at the same time the beloved of God, but that is who we are. Pray that we will share a Holy Lent together, accepting each other in all our humanity and loving each other as God loves us. Pray, read, study, gather to learn something new. Take advantage of every moment to learn more about who God is.

Faithfully,

Deacon Christine



HOW TO DISCOVER YOUR UNIQUE SPIRITUAL GIFTS

TWO Sunday afternoons from 4 – 6 PM: March 16 and 23

Do you know what your unique God-given gifts are for service? Do you know how you fit in to the broader mission of the church? If not, then come and join Fr. Nathan for these two sessions where we will study the biblical understanding of spiritual gifts and explore how our personal passions and styles are used by God for the benefit of others. Every person has a special role to play in God's mission, and each one of us needs to find this!

Pre-session Prep: Before March 16, all who wish to participate must complete a **Spiritual Gifts Experience Assessment**. Pick one up ASAP in the Parish Office!

Ash Wednesday, March 5, 2014

The Ash Wednesday Liturgies will be as follows:

- 7:00am: Ashes-to-Go at the Pratt Abbott corner
- 12noon: The Ash Wednesday Liturgy
- 4:00am: The Children's Ash Wednesday Service
- 7:00pm: The Ash Wednesday Liturgy with choir



FAMILIES!! At 4:00 pm on Ash Wednesday, Father Nathan will hold a special Children's Service. It will be approximately 30 minutes long and will include an imposition of ashes, but no Eucharist; it is specially designed to be *child friendly*.

Vestry Highlights for February meeting

by Hugh Smith, Senior Warden

Vestry Retreat Highlights

The vestry held its annual retreat February 8 in the youth room of the Parish House from 9 to 3 pm. We got started with coffee and goodies and then a warm-up exercise called two truths and a lie led by Carrie. The object was to get to know each other a little better by asking the group to figure out which statement was the lie. We learned many interesting facts about our fellow parishioners, too numerous to mention here but two of the most surprising were that Nikki (and Lester) are active target shooters and that Carrie served in the Army.

We spent the rest of the morning working on ways to grow the parish in both regular attendance and financial support. We started our discussions by looking at broad goals in the areas of average Sunday attendance, pledging units and average pledge and ministry participation/parish engagement. For each goal we discussed how we were doing currently and what our goal should be. We then developed possible tactics for achieving those goals. Given the energy and ideas offered, it was clear that we would need more time to solidify the goals and establish the specific tactics we would work on let alone work on the several other broad goals on our list. Later in the meeting we dis-



cussed possible ways to make our monthly vestry meetings more efficient so that we can spend an hour or more each month on this effort during each of our meetings this year.

Trinity Episcopal also held their vestry retreat the same day in the Guild Room so a joint Noonday

Prayer was held in the new chapel. The chapel was nearly filled and provided a wonderful place for the two vestries to worship together with our voices filling that space. We also shared lunch with Trinity and shared our various delicious foods as well.

After lunch, it was back to work. Nathan presented an inspiring video from 2013's Global Leadership Summit sponsored by the Episcopal Church. It dealt with how to look at leadership influence in different ways - focusing on what motivates us and what abilities are needed.

Finally, we held a short vestry business session where we approved the Parochial Report, elected Elizabeth McIntosh to the 2015 nominating committee and elected Bill Gowen as Treasurer.

It was a productive meeting in the comfortable space of the youth room, and we enjoyed the prayer and fellowship with our Trinity brothers and sisters.

Wednesday Evening Lenten Series: *March 12, 19, 26 and April 2 & 9*

‘Chanting for All’

An Ancient Spiritual Practice for Contemporary Christians

Can you talk? If so, then YOU can chant! Come and learn about the ancient practice of chanting from Fr. Nathan and Bruce Fithian during our Lenten Soup & Salad Program.

Each week, we will all learn to chant portions of the ancient monastic Compline office, which we will all chant together on April 9 at 7 PM

No musical knowledge or skill is required.

On Wednesdays in Lent, we'll gather for supper, discussion, instruction, and practice in the auditorium. The format is as follows:

- | | |
|-------------|---------------------------------------------------------|
| 6:00 | Dinner: Bring a soup, salad, bread, or beverage. |
| 6:30 | Instruction, practice and reflection |
| 7:30 | Closing prayer and clean-up |
| 7:45 | Out the door! |



Stewardship Update

by Janet Bowne

God's Power at Work within Us!!

All of us, working together, make Saint Mary's the special place it is. We support one another and our mission with our time, talents and treasure. Thank you! No matter what gifts you're able to share, they are appreciated. By now, all parishioners should have received a pledge packet in the mail. We hope you will consider making a pledge of support for Saint Mary's. Pledge Sunday is March 2nd. Please drop your pledge form in the offering plate or mail or drop it off at the Parish Office. Choose the option that is most convenient for you. If you would like to pledge your support and didn't receive the pledge packet, please contact Beth Shaw (781-3366, admin@smary.org), and we will get one off in the mail to you.

2014 Class for CONFIRMATION, RECEPTION & REAFFIRMATION

Initial informational meeting: Sunday, MARCH 9, 11:30 AM (after the 10 AM liturgy)
Concluding liturgy for Confirmation, Reception and Reaffirmation with Bishop Steve:

Sunday, November 9, 5:00 PM (regional liturgy hosted by Saint Mary's)

Who should come to this meeting and join this class? Those who are interested in...

Confirmation: "In the course of their Christian development, those baptized at an early age are expected, when they are ready and have been duly prepared, to make a mature public affirmation of their faith and commitment to the responsibilities of their Baptism and to receive the laying on of hands by the bishop." (The BCP, P. 412). All of our young people who are in high school (at least 14 years of age) are invited to join this class and to prepare for confirmation.

Reception: All of those who have been confirmed already in another tradition and who want to officially become members of Saint Mary's and The Episcopal Church.

OR Reaffirmation: All confirmed Episcopalians who are at a point in their lives where they wish to make a public re-commitment to their journey with our Lord Jesus Christ.

The schedule and the structure of our class meetings will be determined by the participants and Fr. Nathan, but the emphasis will clearly be upon having enriching spiritual experiences and open, interactive relationships.

Come and learn more! Or contact Fr. Nathan for more information: 609-410-7573 or nathanferrell@smary.org.

The St Mary Schola, under the direction of Bruce Fithian, will present *Miserere Mei*,



a program of mostly early music, on March 28, Cathedral of St. Luke, Portland (7:30 PM) and March 30, Church of Saint Mary, Falmouth (7:30 PM). Besides two settings of *miserere mei* by the great giants of the renaissance, Josquin des Prez and Thomas Tallis, there will also be rousing concertos for organ and recorder by Handel and Vivaldi, accompanied by period instruments and a complete performance of Bach's cantata 150. For the first time the Schola will present a choral work by Francis Poulenc that harkens back to earlier times, the cantata *Un soir de neige*. Tickets are \$15.00 for adults, \$12 for seniors and students and a family cap of \$40.00, available at the Schola's web site: stmaryschola.org or at the door.

The Legacy Project Milestone:

By Jennifer Gregg

THE CAMPAIGN HAS REACHED ITS PLEDGE GOAL!

It is a great pleasure to announce that S. Mary's reached the Legacy Campaign pledge goal of \$2.9 million in February with the receipt of a gift in the form of a bequest from Ruth E. White.

Ruth first experienced the S. Mary's campus some 40 years ago when she moved to Falmouth following the untimely death of her husband and when she became a member of the St. Mary's Garden Club. Then Rector Stephen Foote invited her to attend services and Ruth soon became involved in the Altar Flower Guild, the Memorial Reception Guild and was an early member of what has now come to be known as our Office Angels. She co-founded the Kneeler Guild with Hannah Russell, measuring and marking scores of canvasses on which Hannah painted her designs. Accomplished at needle-point, she taught many parishioners that art so that they, too, could stitch.

Ruth chose to remember S. Mary's in her will and a portion of that gift was in the form of an unrestricted bequest that S. Mary's received following Ruth's death in May 2013 at the age of 106. Consistent with Vestry policy, the Legacy Project is the beneficiary of this unrestricted gift.

As welcome and greatly appreciated as this gift most certainly is, we have reached this milestone thanks to *all* of the 233 donors who have chosen to support this campaign. Each gift was critical; no single gift was more important than another. That we have reached this point is something in which all S. Mary's parishioners can and should take great joy and pride.

We now turn our sights to the successful completion of this campaign, which will be when every pledge is satisfied and our creditors paid. The grand celebration will then begin, marking an achievement that again proves that there is NOTHING this parish cannot accomplish when it comes together in common cause.



S. Mary's Legacy Project

*Honoring Our Faith,
Enriching Our Community*

CALLING ALL BOOKS!!!!

S. Mary's is holding their annual BOOK, BAKE & SOUP SALE

MARCH 22nd 2014 9 am - 1 pm

WE NEED YOU to:

**donate books • sort books • sell books
Set-up or clean up and/or pack up
bake for the bake sale**

Please sign up to help in whatever way you are able and willing. There are sign-up sheets outside the Guild Room. Any questions about baking, contact Elizabeth Heinzman. Any questions about books, contact Becky Pride. Regarding Books: Please leave them downstairs (there's an elevator!) in the storage room on the big table **by March 16th** (preferably earlier, please.) Please do not donate used textbooks, encyclopedia sets, magazine sets.

**The Episcopal Church of Saint Mary, 43 Foreside Road (Route 88)
Falmouth FMI: call 781-3366 www.smary.org**

This event will benefit S. Mary's Charities

Saint Mary's reaches out - Near and Far

Beginning with this article for the AVE, the Outreach Ministry will be sharing information about the various groups and organizations receiving financial and hands-on support from our parish. We believe it is critical to share this information to understand fully the work these great organizations do to assist those in need. This month we begin with a profile of Habitat for Humanity.

Also, as you know, we are continuing to transition our efforts and focus to those projects that allow everyone in the parish to become involved, in various ways, to support organizations both near and far. In March there are two great opportunities for such involvement:

✦ **Habitat for Humanity - Parish Build Day in Freeport-Saturday, March 8th**
(and start planning for Falmouth Family Five Miler Run/Walk, April 26th, 9am.)

✦ **Annual Book, Bake and Soup Sale-Saturday, March 22nd**

Sign-up sheets for both of these great mission efforts are in the Parish house.

Finally, we are always seeking new members for the Outreach Committee. Not only do we make decisions regarding what organizations will receive financial support from Saint Mary's for the work they do to assist those in need, but we also continually look for opportunities for the entire parish to become involved in helping these and other organizations in hands-on mission work. For example: the trip to Haiti last fall, the Habitat Build in March and the upcoming trip to Urban Promise this summer and to a Maine parish in the early fall. If you have a passion for helping those in need, giving back, or simply working to make the world a better place, come to one of our next meetings or talk with any of the committee members. We will certainly welcome

Support "Souper Supper" Buy Fair Trade "Coffee by Design" Coffee!

Black & Tan - a darker roast

Casco Bay - a medium roast

"Coffee by Design" 12 oz. bags of ground fair-traded, organic, delicious coffees are on sale at S. Mary's for \$10 a bag (Decaf is \$11). ...and support fair trade practices ...and a local parishioner-owned business... and get GREAT organic coffee! Win! Win! Win!



Community Souper Supper

March 14th and 28th

Enjoy this community-wide fellowship offering, dining in a relaxed candle-lit atmosphere. You will be feted with a complimentary main course, salad, rolls, dessert and beverage. Wonderful for singles and families alike!

Offered twice each month on the 2nd and 4th Fridays from 5-7pm in the parish house auditorium.

No reservations required. Just bring your family and friends and enjoy! It's a blast!



Cinema Night at S. Mary's after Souper Supper on March. 14th !

The Feature of the evening will be the 1947 classic "Crossfire"

Homicide Capt. Finlay finds evidence that one or more of a group of demobilized soldiers is involved in the death of Joseph Samuels. In flashbacks, we see the night's events from different viewpoints as Sergeant Keeley investigates on his own, trying to clear his friend Mitchell, to whom circumstantial evidence points. Robert Young, Robert Mitchum, Robert Ryan (86 minutes)



Saint Mary's Mission – It's Also a Local Affair

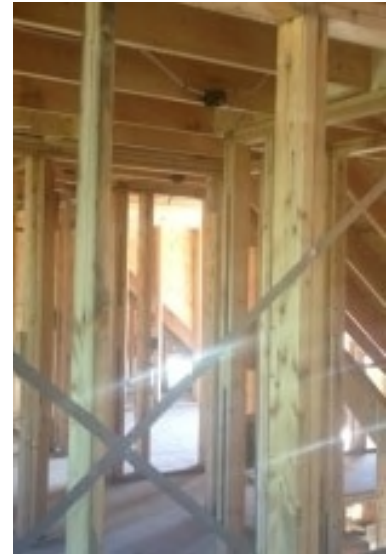
HABITAT BUILD DAY – March 8, 2014, 9-3pm

One need not travel abroad to seek Christ in the eyes of others. For many years, S. Mary's has partnered with Habitat for Humanity of Greater Portland to offer parishioners with the opportunity for mission in our local community. Working side by side - in common cause with each other and with those of different backgrounds - gives us all the chance to see God at work in our lives, and we are again fortunate to be able to offer such an opportunity on March 8th when we will gather in Freeport on Hummingbird Lane for our annual "S. Mary's Habitat Build Day."

You are invited to join together for one (or two!) three-hour shifts (9am-noon; 1pm-4pm), and also for lunch that will be offered to all. Although you need to be 18 years of age (16 or 17 with a liability waiver signed by a parent or guardian), you need have no special skills. All training is provided on-the-job! We will likely be inside, but do dress warmly! Hammers and other tools will be provided!

FMI, Jennifer Gregg, jenniferanngregg@gmail.com

The first of eight houses being built by Habitat volunteers in Freeport was dedicated earlier this month when homeowner Nyapeni Doulthan moved in. Parishioners...and particularly our Guiding RAY children... will remember Nyapeni who visited S. Mary's last spring as we prepared for the annual Falmouth Habitat walk. At the dedication, Nyapeni commented, "I know what's hidden behind the walls of this house," she said. "I know single nails in this house. It's going to be full of the spirit of the volunteers – the love, the kindness."



FALMOUTH FAMILY FIVE – MILER, April 26, 9am

Parishioners will once again have a wonderful and fun opportunity to support the work of Habitat for Humanity on April 26th. This year, the traditional walk will be a "walk/run," professionally timed for those who are training and qualifying for longer runs later in the season. The five-mile route runs from the S. Mary's Rectory to Fore-side Community Church and back. S. Mary's will again host the event, with breakfast snacks and entertainment for children (of all ages) by Party Palooga.

Participants (walkers and runners) can register on line now at www.habitatportlandme.org. Advance registration fee for runners is \$25.00 (\$75 family cap); walkers can register with a donation of their choice. Same day registration for runners is \$30. As always, all participants are encouraged to fundraise for Habitat in addition to the registration fee to maximize our support for Habitat. All proceeds go to building houses with qualified Habitat homeowners in the greater Portland area.

We are also seeking volunteers to help with registration that morning. FMI, Anne Lafond, alafond@maine.rr.com

S. MARY'S WELCOMES UNIVERSITY OF PHILADELPHIA HABITAT VOLUNTEERS MARCH 18-22!

A group of 14 students from the University of Philadelphia will volunteer during their spring break at the Habitat for Humanity of Greater Portland build site in Freeport from Tuesday, March 18 through Saturday, March 22. They will be staying at S. Mary's (in our Guiding RAY and Middler spaces) during their time in Maine. This is the second time the University of Philadelphia has participated in this program with Habitat for Humanity of Greater Portland. They will be working on completing the interiors of two of the units, and possibly doing exterior work on a duplex. We are delighted to welcome them to our fresh new spaces at S. Mary's!

SUMMER 2014 at SAINT MARY'S

Mark your calendars NOW for all of these summer adventures!

Vacation Bible School - June 23 - 27, 9 AM – 12 Noon

Every day here at Saint Mary's

Camp Bishopswood - June 29 – August 16

Our beautiful Diocesan camp with programs available for youth from 6 to 18 years of age. See

www.bishopswood.org for all the details. Scholarships are available.

Maine & New Hampshire Week @ Young Life Camp - July 6 – 12

In Saranac Lake, NY = the best week EVER for all High School students

Urban Promise Pilgrimage - August 3 – 9 in Camden, NJ and Philadelphia, PA

An all-parish service trip to work with inner-city children at day camps

10th Annual Lobster Bake & Auction - August 9, 4:30 – 8 PM

Global Leadership Summit - August 14 – 15 in Greenland, NH

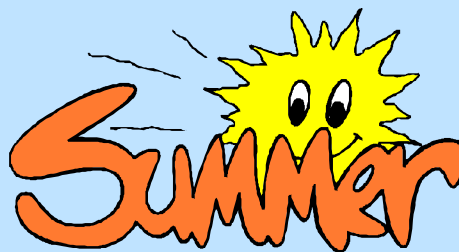
World-class leadership training in a Christian context

Camp BION @ Bishopswood - August 19-23

A few days away for our teens to explore their faith together.

ZENITH PILGRIMAGE: ALL-PARISH Journey to the Summit of Katahdin

August 28 – 30 - A two-night hiking adventure



ACOLYTE TRAINING: Sunday, April 6th 11:30 AM – 1:30 PM

Calling ALL people! Come and serve God and the church as an Acolyte! Whether you are female or male, 9 years old (the minimum requirement) or 90 years old, Democrat or Republican, left-handed or right, you can be an Acolyte! Everyone who feels called to serve in this special way is invited to come for this 2-hour training session right after Coffee Hour. Questions? Contact Tricia Wheeler at tjwheeler@maine.rr.com.



Vacation Bible School at S. Mary's

led by The One and Only Elizabeth Heinzman

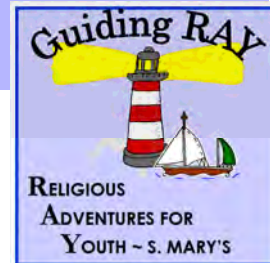
June 23-June 27

We invite everyone (all shapes, sizes and ages) to participate!

Please let her know if you want to reserve a spot on the volunteer team. For more information, contact the parish office, 781-3366 or Elizabeth at theheinzmans@hotmail.com



Christian Formation - RAY Beams



Our Guiding RAY Teacher of the Month: Aleece Herlihy



Aleece moved to Maine in 1997 to be in Portland. She and her husband Joe and their sons Joseph (8) and Joshua (7) moved to Falmouth in 2011 and began attending S. Mary's in 2012, having been invited by Julie Morrison. The Herlihys were particularly interested in a vibrant children's education program for their sons, and when the Guiding RAY program adopted the Godly Play curriculum, Aleece was "all in." Aleece loves being part of the Godly Play program and is particularly moved as she watches the children regularly sharing stories and their understanding of God among themselves, in their own way. In addition to teaching, Aleece also serves on the Guiding RAY Leadership Team that administers the Guiding RAY program. When they are not at S. Mary's, the Herlihy family can be found at the beach or in the mountains, loving all that Maine has to offer.

This Month at Godly Play

March 2: The Circle of the Church Year Each year, the Christian people move through a circle of memory and expectation to open themselves to the elusive presence of God. In the Godly Play classroom, we pay attention to this circle of movement each week. This invites children to move through the Church's special kind of time.



Lent is the season when we prepare for Easter. The following weeks are a solemn time, overflowing with meaning, when we view life from the perspective of our existential limits and the sacrifice of Christ.

March 9: The Mystery of Easter This lesson gives an introduction to the relationship of Lent to the Mystery of Easter as well as how Easter overflows into the season of Easter.

March 16: The Faces of Easter We move toward the Mystery by hearing the stories of Christ's journey toward the cross and resurrection. This week's presentation focuses on the face of Christ as a newborn child.

March 23: The Faces of Easter This week's presentation focuses on the face of Christ as the One who was lost and found.

March 30: The Faces of Easter This week's presentation focuses on the face of Christ as healer and parable-maker.

Family-Friendly Events in March

Saturday, March 1: Mardi-Gras Pot Luck Talent Show! 5-7pm. Magic tricks, humor, storytelling, piano playing, singing, dancing and unforgettable moments in time occur before our very eyes. We want everyone to have fun, relax and laugh away their winter blues right before the Lenten season.

ASH Wednesday, March 5 Children's Ash Wednesday Liturgy A brief, hands-on prayer service prepared for our young people. In the Fr James Chapel at 4PM.

Wednesdays, March 12, 19, 26 (and April 2, & 9) "Chanting for All"; Pot-luck dinner at 6pm, Instruction, practice and reflection with Bruce Fithian and Fr Nathan, 6:30-7:30 Family Friendly and All Welcome!

Fridays, March 14 and 28: Cooks' Night Out! 5-7pm S. Mary's Souper Suppers (with movie to follow on March 14) Delicious home-made soup, bread, salad, desserts, free and all are welcome!

Saturday, March 22: Book, Bake and Soup Sale 9am-1pm Wonderful selection of books and movies for all ages, baked goods and soups on sale for pennies on the dollar! Don't miss it! All proceeds benefit S. Mary's Outreach projects.

JOIN US!

9:15am-9:30am – Family Chapel with Father Nathan (Fr. James Chapel in Parish House)

9:30am: Godly Play classes begin promptly for K-5 and Nursery (Guiding RAY spaces downstairs in Parish House)

10:35am: Pre-K-Grade 5 children join their parents in church for the Eucharist

Coffee Hour for parents and children in the Auditorium follow church

Nursery care is available every Sunday of the year

OUR SHARED NARRATIVE OF FAITHFULNESS

A 'homilette' remembered and shared by Jennifer Gregg on Sunday, February 23, 2014

"Send your Holy Spirit and pour into our hearts your greatest gift, which is love, the true bond of peace and of all virtue."

Is it not this, the search for that gift of God's love, the practice of sharing of God's love between each other and with those outside this sanctuary that is basic to our life at S. Mary's? I have the privilege of speaking to you this morning about just that, and have chosen to focus on the lives of two singular parishioners to help in illustration: Helen Parker and Ruth White. Many of you knew these two women who passed on in 2008 and 2013, respectively.

I choose these two women for a couple of reasons. First, circumstances are such that they will not be embarrassed by or contradict any of my comments here today. Also, these two women hold a special place in my heart because of the Legacy Campaign. Helen Parker was our very first donor, way back in 2008 when, following her death, a nascent Legacy project was a beneficiary of part of her bequest to S. Mary's. And Ruth White, as it turns out, is the person who has "brought the Legacy campaign home," so to speak. Yes, I'm very pleased to announce today that thanks to a bequest from Ruth, we have reached our Legacy Campaign Pledge Goal. This is a wonderful milestone for which we give thanks to every one of our 233 donors, as it was each and every gift that has brought us to this point. Now, forgive me if I take a moment to stress and perhaps clarify that the campaign has reached its PLEDGE goal. This campaign WILL be successful....when ALL pledges are paid in full, and THAT is when the real celebration will begin. But this is nonetheless a milestone in which we can and should take some pride and great joy.

So back to Helen and Ruth. One could not envisage two more different women, who led two more disparate lives. Their one common denominator was that they sought and found a loving family at S. Mary's, they were devoted to this church, were nurtured and cared for by this church family from the time they walked through the doors right through and including the time of their deaths.

Helen was a high school graduate who came to Maine with her husband from New York City, where she had worked for the telephone company. She led a very sheltered and simple life with her husband and found S. Mary's late in her life, coming from a Roman Catholic tradition. She was a very unassuming woman but also quietly very inquisitive about her faith and her adopted church. She was invited by a parishioner to join bible study on Thursdays at S. Mary's to pursue her search and questions. She became a devoted member of that Thursday Group, and never missed an opportunity to attend other Christian Formation offerings as well. She was also drawn to and greatly enjoyed fellowship events, always bringing to the table her famous Danish Christmas Cookies, no matter what the season.

When her husband died, Helen was lost. This was a woman who had never learned to drive, had never seen a check-book, had NO idea about her financial status or what to do about it. She had no immediate family in the environs and her extended family was...distant. The Rector, Father James, and fellow parishioners re-



2007 - A few of the Thursday Group participants celebrating a birthday.

(Shared faithful - continued from previous page)

sponded with immediate and varied forms of pastoral attention, from things as simple as rides to church and to fellowship events, all the way to help in securing professional support to answer her financial and legal concerns. This parish - YOU- watched out for and took care of her, right to the end. And the end came when James took a midnight call from Helen who was in distress, alone at home. She died in his arms as the EMTs were ringing her doorbell. Helen is buried right here at S. Mary's.

Ruth White was anything but sheltered and unassuming. She was a well-educated woman who managed her own finances and investments very adroitly throughout her life without benefit of counsel, having purchased her first stocks in the 1920's. She first experienced the S. Mary's campus through her membership in the S. Mary's Garden Club when she moved to Falmouth some 40 years ago following the untimely death of her husband. Then Rector Stephen Foote invited her to attend services and Ruth soon became involved in the Altar Flower Guild, the Memorial Reception Guild and was an early member of what has now come to be known as our Office Angels. She co-founded the Kneeler Guild with Hannah Russell, measuring and marking scores of canvasses on which Hannah painted her designs. Accomplished at needle-point, she taught many parishioners that art so that they, too, could stitch.

Ruth was a leader, outspoken in her praise and opinions...you always knew where Ruth stood on an issue. As the years went by, she had to pull back from her activities as she began losing her sight to macular degeneration. But she never missed a Sunday service, or the Thursday bible study—she shared that passion with Helen. Parishioners drove her to church every Sunday and Thursday; she always walked to the rail for communion guided by the strong and ever-present arm of Hugh Smith and never missed a coffee hour in the Parish House kitchen.

She lived alone until she was 102. During storms, parishioners called on her to ensure she was safe and had hot meals, and assisted her in securing professional in-house assistance for her household tasks and personal affairs. When she fell one night, only to be discovered near death the next morning by the EMT's, then James was at her side to ensure her safe passage to the hospital and onward to Falmouth by the Sea where she lived another 4 years. There, she enjoyed weekly visits from fellow parishioner, Betsy Stoddard, who also did her shopping, her laundry and arranged for the birthday gatherings each year, attended by her S. Mary's friends. At age 106, the end came. Our Rector, Father Nathan, was at her side to provide Last Rites, and Jim and Betsy Stoddard sat through the night with her, holding her hand until she took her last breath.

I've taken some time to describe the lives of these women not only because their financial gifts started and ultimately finished a pledge campaign, but because I think their stories underscore the nature of our communal life at S. Mary's. Helen and Ruth were very different individuals, with different passions, with very different, active lives outside of S. Mary's. Just as we all are very different, one from the other. Some of us are quiet and reserved. Some of us are outspoken. We all come from different backgrounds, from different parts of the country, with different educations, different political views, of different economic levels, different religious traditions. We all lead very active lives, with different passions and pursuits, outside of S. Mary's.

Just like Helen and Ruth, we are drawn to different things within S. Mary's. Some of us make cookies; some of us stitch kneelers. Some are drawn to S. Mary's by the quiet strength of prayer in church on Sundays. Others thrive on fellowship. Some are here to see that children receive a Christian education. Others are passionate about our Outreach programs.

But just as it was with Helen and Ruth, there is one thing that we all share: We are all members of this remarkable S. Mary's family, which, at its core, seeks to feel and understand the depth of God's love. We learn to practice that love in This Place by caring for each other, and it is here that we garner the strength to go out these doors to share that love in the world. And just like Ruth and Helen, we know that, through thick and thin, this church, our S. Mary's family, will be there for us—no matter what the time of our lives, no matter what our personalities, our backgrounds, our status or situation might be. It is what we are called by God to do and is what our community, our S. Mary's family, is all about. Thanks be to God! Amen.

Going to the Hospital??

If you are planning a trip to any of the area hospitals, please call the office and let us know so that we can pray for you, and the clergy and/or perhaps a member of the pastoral partners group can visit you.

If your trip to the hospital is unplanned, ask someone to call for you. When you register, indicate that you are a member of S. Mary's in Falmouth. How you are doing matters a great deal to your S. Mary's family!

News, Notes, Kudos, Dates & Reminders

(Send your 1-3 line notes, announcements or thanks to Beth at admin@smary.org by the 20th of the previous month)

Many thanks to Shelly and John Maher for a wonderful Post-Sparkles Celebration at their home for all the "Sparklettes"!

Huge thanks to Jennifer Curran for organizing a great sledding party for our Guiding RAY families!

Danke

Thanks to Carrie McIntosh for organizing the best "Ministry Fair" ever!

Thanks to Bruce Fithian and Fr Nathan for offering the Candlemas service on Feb. 2 . Beautiful.

Thanks to Anne Lafond and her hospitality team for a wonderful Annual Meeting brunch!

THANKS!

Thanks to Mary Ann McLean for a stupendous "Welcoming Gathering " at her home for newcomers this month.

M e r c i

Huge thanks to Jennifer Gregg for organizing yet another Memorial Reception while Marge was recuperating. And thanks to all members that have stepped up and helped with the last four receptions. This is such an important ministry and we couldn't do it without you all.

Men's Snowshoe Adventure: March 13-15

ALL men of any age or ability are invited to join us as we journey up into the Carrabassett Valley for yet another snowshoe adventure. "The Edwards Lodge" construction is now complete. We'll depart after work on Thursday evening, snowshoe to a mountain summit on Friday, and return to Saint Mary's on Saturday. Bring your Nordic or Telemark skis also, if you have them. Questions? Ready to join the fun? Please speak with Fr. Nathan!

Don't Forget!



March 9, 2014 at 2am

Wednesday Afternoons at S. Mary's

(starting March 12th for 6 weeks)
(ages 9-15years)

★ **THE STUDIO @ Saint Mary's**

- **Painting and Color Relationships: A Visual Art Feast of Color Exploration**
(Adult classes 4:45 - 6pm)
- **Comic Book Illustration**

★ **TUTORING @ Saint Mary's**

- **Academic Fundamentals**
- **Tutorial or enrichment work with first or second grade students**

See attached Information sheet or contact Erlin@erlnmcgefferrell.com

Save the Date and reserve your table before they are all gone

Saint Mary's Annual

BRIDGE-A-THON

Friday, May 16th 1-4 PM



Contract Bridge enthusiasts of all levels are invited to form a table for an afternoon of friendly bridge. Tea, coffee and sumptuous refreshments included in price of admission. 20 tables available.
Admission: \$40 per table / \$10 per person



Here are some important dates in our Saint Mary's parish family

Happy March Birthdays to:



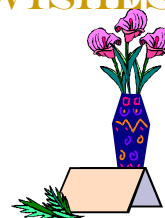
1	Halley Taylor	6	Bev Knudsen	23	Sophia Bisson
2	Janet Bowne	6	Anne LaFond	23	Fiver Gregorie
2	Emmett Frueh	7	Annie Mead	23	Ryan Stinneford
2	Tricia Wheeler	9	Carson Gall	24	Rayle Ainsworth
3	David Squire	9	Grace Richards	25	Frances Pratt
3	Andrea Myles-Hunkin	12	Sam Hyland	25	Will Winter
4	Al Ahlers	13	Talie Harris	26	Cole Teng
4	Mary Ellen Crowell	14	Judy Oliver	27	Lilly Young
4	Joshua Herlihy	17	Ciara Mokeme	28	Justine Means
5	Rachel McGonigle	17	Lillian Moore	29	Thomas Gale
6	Adrian Kendall	20	Nolan Browne	30	Henry Curran
6	Frederick Goodrich	21	Cole Buchanan	31	Sam Claytor
		21	Elizabeth Heinzman		

We'd love to include good wishes on your birthday and anniversary. If we don't yet have the dates, please send yours and your family's special dates into the parish office, and we'll be sure to include them on your special month. admin@smary.org or call 781-3366 or drop a note to the church. Thanks!

HAPPY MARCH ANNIVERSARY WISHES TO:



6	Don & Mary Jane Northrup
28	Onnie & Bob Hastings



Coffee Hour Hosts Needed

Coffee Hour is meant to be a quick parish gathering, with coffee and juice available for children, along with a couple of store bought or home baked treats. Most Sundays, coffee is already made (thanks to Hugh Smith!), so it just entails a simple set up and clean up. *Coffee Hour* is a friendly intergenerational gathering for all parishioners and certainly a way for us to welcome visitors following Sunday services. We at S. Mary's enjoy these informal times with parish friends and family over a cup of coffee and sweet treat. So that this may happen, we invite you to share in hosting a Sunday. If the various guilds of S. Mary or two families working together host a Sunday, we can enjoy *Coffee Hour* all year! It makes for a fun experience as well. Hospitality sign-up clipboard is available on the table outside of the Guild Room. ...any volunteers ?



We need your involvement... Coffee Hour can't happen every Sunday, unless we have more volunteers. Contact: Betsy Stoddard, 829-2026 jbstod@myfairpoint.net

The Episcopal Church of Saint Mary

Worship Leader Schedule: Mar. - Apr. 2014

	8:00am Ushers	8:00am EM/Lectors	10:00am Ushers	10:00am Lector	10:00am Euch Minister	10am Acolytes	Altar Flowers	Flower Delivery	Coffee Hour Host
2-Mar Last Epiph	Dave Fenderson Mac Hinkel	Al Ahlers	Lowell Brown Mark Winter	Ella Brown	Jeff Campbell Ginny Stelk	Emily Chloe	Melissa Kane	~	Janno/Hurdman
9-Mar Lent 1	Al Ahlers Becky Pride	Len Taylor	Tom LaPlante Harold Otte	Marian McCue	Terry Brown Jim Stoddard	Kevin Kyle & Lauren	Lent	~	Jennifer Curran
16-Mar Lent 2	Len Taylor Jim Kane	Lad Taylor	Jack Heinzman Andrew McIntosh	Jennifer Gregg	Carla Birt David Robinson	tbd	Lent	~	Art & Faith Gr
23-Mar Lent 3	Ed Ainsworth Rayle Ainsworth	Mac Hinkel	Charlie Hurdman Chuck Horton	Betsy Stoddard	Nadine Timberlake Stan Eaton	Julie Emily & Lauren	Lent	~	Middlers
30-Mar Lent 4	Tom Donaldson Mac Hinkel	Becky Pride	Lowell Brown Tom LaPlante	Shelly Maher	Linda Eaton Greg Unfricht	Carrie Michael & Elizabeth	Lent	~	OPEN
6-Apr Lent 5	Baer Connard Al Ahlers	Mary Ann McLean	Mark Winter Harold Otte	Harold Otte	Andrea M-H Ginny Stelk	tbd	Lent	~	OPEN
13-Apr Palm Sun	Dave Fenderson xx	Al Ahlers	Jack Heinzman Andrew McIntosh	Lowell Brown	Tom Pettingill Terry Brown	tbd	Palm	~	Hot Cross Buns
Maundy Thursday			6pm Ushers tbd	6pm lector Betsy	6pm EM Jim & Ginny	6pm acolytes tbd	Garden of Repose		
Good Friday			7pm Ushers tbd	7pm lector Betsy	7pm EM Jim & Ginny	7pm acolytes tbd	bare		
Easter Eve Vigil			tbd			tbd			
20-Apr Easter/Pascha	9am	9am Len Taylor	11am	11am Ginny Stelk	11am Lincoln Stelk Jeff Campbell	11am	Easter		Easter
27-Apr Easter 2		Lad Taylor		Ella Brown	Jim Stoddard Carla Birt				Outreach

If unable to fulfill your scheduled duty on the assigned day, please find your own replacement and inform Beth in the office of the change, 781-3366



March 2014

The Episcopal Church of Saint Mary



Sat, March 1st
9am - BSM
1 - 4:30pm Marriage
Check-up Retreat
5pm Mardi Gras
Talent Show & Potluck

Sun	Mon	Tue	Wed	Thu	Fri	Sat
2 The Last Sunday after Epiphany 8am - Traditional Eucharist followed by coffee hour 9:15 am Family Chapel / Art & Faith 9:30am Guiding RAY classes/Middlers 10am - Contemporary Eucharist followed by coffee hour	3 12 - Noonday Prayer 1pm Guiding RAY Team	4 10am OSL 12 - Noonday Prayer 1pm - Staff Meeting 7:00pm AA in Auditorium 7:30 Allanon	5 WEDNESDAY 7am - Ashes-to-Go 12noon liturgy 4pm (child friendly) 7pm liturgy with choir 10am Mainely Weavers 5pm Outreach	6 10:30am Wisdom Seekers 12 - Healing Eucharist 4pm Boy Singers of ME 7pm Choir rehearsal	7 Office Closed 12 - Pray wherever you are 5:30pm Allanon	8 9am - BSM 9am - 4pm Habitat Build in Freeport
9 The 1st Sunday in Lent 8am - Traditional Eucharist followed by coffee hour 9:15 am Family Chapel / Art & Faith 9:30am Guiding RAY classes/Middlers 10am - Contemporary Eucharist followed by coffee hour 11:30am - Confirmation etc meeting	10 11am - Garden Club 12 - Noonday Prayer	11 9am - S. Mary's volunteers at St. Elizabeth's 10am OSL 12 - Noonday Prayer 1pm - Staff Meeting 7:00pm AA in Auditorium 7:30 Allanon	12 12 - Noonday Prayer 3-6pm Wednesday Art & Tutoring 6:30pm Lenten Soup & Salad Series - Chanting for All	13 10:30am Wisdom Seekers 12 - Healing Eucharist 4pm Boy Singers of ME 7pm Choir rehearsal	14 Office Closed 12 - Pray wherever you are 5-7pm Community Souper Supper 5:30pm Allanon 7pm - Classic Cinema	15 9am - BSM
16 The 2nd Sunday in Lent 8am - Traditional Eucharist followed by coffee hour 9:15 am Family Chapel / Art & Faith 9:30am Guiding RAY classes/Middlers 10am - Contemporary Eucharist followed by coffee hour 4 - 6pm Spiritual Gifts	17 12 - Noonday Prayer 1pm Guiding RAY Team	18 10am OSL 12 - Noonday Prayer 1pm - Staff Meeting 6pm - Vestry (at LaFonds) 7:00pm AA in Auditorium 7:30 Allanon From: Unity of Philadelphia Habitat volunteers	19 Nathan at Fresh Start 12 - Noonday Prayer 3-6pm Wednesday Art & Tutoring 6:30pm Lenten Soup & Salad Series - Chanting for All Staying in our tower	20 10:30am Wisdom Seekers 12 - Healing Eucharist 4pm Boy Singers of ME 7pm Choir rehearsal AVE Deadline for the week ahead (see)	21 Office Closed 12 - Pray wherever you are 5:30pm Allanon Build in Freeport, Say Hello!	22 9am - BSM 9-1pm Book, Bake & Soup Sale
23 The 3rd Sunday in Lent 8am - Traditional Eucharist followed by coffee hour 9:15 am Family Chapel / Art & Faith 9:30am Guiding RAY classes/Middlers 10am - Contemporary Eucharist followed by coffee hour 4 - 6pm Spiritual Gifts	24 12 - Noonday Prayer	25 10am OSL 12 - Noonday Prayer 1pm - Staff Meeting 7:00pm AA in Auditorium 7:30 Allanon	26 12 - Noonday Prayer 3-6pm Wednesday Art & Tutoring 6:30pm Lenten Soup & Salad Series - Chanting for All	27 10:30am Wisdom Seekers 12 - Healing Eucharist 4pm Boy Singers of ME 7pm Choir rehearsal 6:30 - Doves meet in GP	28 Office Closed 12 - Pray wherever you are 5-7pm Community Souper Supper 5:30pm Allanon Happening H5	29 9am - BSM 1 - 4:30pm Marriage Check-up Retreat 5pm Mardi Gras Talent Show & Potluck Diocesan Retreat
30 The 5th Sunday in Lent Celebrant & preachers - Father David Illingworth 8am - Traditional Eucharist followed by coffee hour 9:15 am Family Chapel / Art & Faith 9:30am Guiding RAY classes/Middlers 10am - Contemporary Eucharist followed by coffee hour 7:30pm - Schola Lenten Concert	31 12 - Noonday Prayer 1pm Guiding RAY Team	4/1 10am OSL 12 - Noonday Prayer 1pm - Staff Meeting 7:00pm AA in Auditorium 7:30 Allanon	4/2 12 - Noonday Prayer 3-6pm Wednesday Art & Tutoring 6:30pm Lenten Soup & Salad Series - Chanting for All	4/3 10:30am Wisdom Seekers 12 - Healing Eucharist 4pm Boy Singers of ME 7pm Choir rehearsal	4/4 Office Closed 12 - Pray wherever you are 5:30pm Allanon	4/5 9am - BSM 3pm - Willard Libby Narrows Service



THE EPISCOPAL CHURCH OF SAINT MARY

43 Foreside Road
Falmouth, ME 04105
207-781-3366 www.smary.org

Our Worship Schedule

SUNDAY Hours

8:00am - Traditional Eucharist
9:15am - Family Chapel
10:00am - Contemporary Eucharist

MONDAY - WEDNESDAY

Noon Day prayer in the Chapel and
wherever you find yourself

THURSDAY

10:30 - WISDOM SEEKERS
12 Noon - Healing Eucharist



THE EPISCOPAL CHURCH OF SAINT MARY

**43 Foreside Road
Falmouth, Maine 04105**

Tel: 207-781-3366

E-mail: smary@smary.org

Website: www.smary.org

The Rev. Nathan Ferrell, *Rector*

The Rev. Christine Bennett, *Deacon*

Bruce S. Fithian, *Organist & Choirmaster*

Beth Shaw, *Parish Administrator*

Office Hours: Monday - Thursday
9:00 am to 4:30 pm

April 2014 AVE: Mar. 20th

Saint Mary's Vestry 2014

Nathan Ferrell, Rector, 899-2543, nathanferrell@smary.org

Hugh Smith, Sr. Warden, 797-9310, hughsails@maine.rr.com

Carrie McIntosh, Jr. Warden, 797-3993, christmascollect@aol.com

Bill Gowen, Treasurer, 415-1412, wwg914@aol.com

Rayle Ainsworth, 846-3191, edandrayle@gwi.net

Linda Eaton, 749-3301, lnaas-eaton@msad51.org

Nikki Evans, 747-4776, nevans2@maine.rr.com

Tim Grace, 878-8081, tmgpac@me.com

Mac Hinkel, 829-3578, clebbyh@yahoo.com

Anne LaFond, 781-8820, alafond@maine.rr.com

Mary Ann McLean 781-4871, mmclean3@maine.rr.com

Patricia Mordecai, 396-4233, pcmordecai@gmail.com

Julie Morrison, 797-2201, jmorrison500@yahoo.com

Becky Pride, 781-4391, beckypride@maine.rr.com

Jim Stoddard, 829-2026, jbstod@myfairpoint.net

Mark Winter, 865-6766, mark.winter@usdoj.gov